

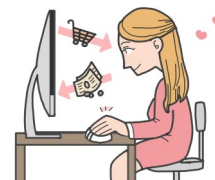
# COMANCHE COUNTY FEDERAL CREDIT UNION

Quarterly Newsletter

October, 2018



**GET READY FOR THE HOLIDAY SEASON!  
CHRISTMAS LOANS WILL BE STARTING SOON!  
WITH GREAT RATES YOU CAN SHOP TIL YOU DROP!**



**WE HAVE A NEW DRIVE—THRU  
ATM!**



**IT IS LOCATED BEHIND THE  
CREDIT UNION  
AT 911 SW A AVE.**

**DON'T FORGET OUR ANNUAL  
HOLIDAY OPEN HOUSE  
FRIDAY, DECEMBER 14, 2018**

**10:00—2:00**

**IN THE LOBBY**

**SNACKS AND PUNCH!**



**IF YOU HAVE FORGOTTEN THE PIN TO  
YOUR ATM/DEBIT CARD YOU CAN CALL**

**1-800-992-3808**

**TO RESET IT**

**TO CANCEL YOUR CREDIT OR DEBIT CARD  
IF LOST OR STOLEN AFTER HOURS CALL:**

**DEBIT CARD: 1-800-472-3272**

**CREDIT CARD: 1-800-325-3678**

**HOURS OF OPERATION**

**LOBBY— MONDAY—FRIDAY 9:00AM TO 5:00PM**

**SATURDAY— CLOSED**

**DRIVE THRU—MONDAY —FRIDAY 8:00AM TO 5:45PM**

**SATURDAY—8:30AM TO 12:30PM**

**HOLIDAY CLOSINGS**

THE CREDIT UNION WILL BE CLOSED

MONDAY, OCTOBER 8TH, FOR COLUMBUS DAY

MONDAY, NOVEMBER 12TH, VETERAN'S DAY

THURSDAY, NOVEMBER 22ND FOR THANKSGIVING

WE WILL CLOSE AT 12:00PM ON DECEMBER 24TH FOR CHRISTMAS EVE

WE WILL BE CLOSED ON TUESDAY, DECEMBER 25TH FOR CHRISTMAS DAY

**RATES FOR CERTIFICATES OF DEPOSITS**

**DIVIDEND RATE/APY**

<b>BALANCE REQUIREMENTS</b>	<b>6 MONTH</b>	<b>12 MONTH</b>	<b>24 MONTH</b>	<b>36 MONTH</b>	<b>60 MONTH</b>
\$1,000.00—\$9,999.99	0.45%/0.45%	0.65%/0.65%	1.00%/1.00%	1.15%/1.15%	1.50%/1.50%
\$10,000.00—\$49,999.99	0.60%/0.60%	0.75%/0.75%	1.15%/1.15%	1.30%/1.30%	1.65%/1.65%
\$50,000.00—\$99,999.99	0.80%/0.80%	1.00%/1.00%	1.35%/1.35%	1.50%/1.50%	1.85%/1.85%
\$100,000.00 AND HIGHER	1.00%/1.00%	1.15%/1.15%	1.55%/1.55%	1.70%/1.70%	2.05%/2.05%
<b>PENALTY (DAYS OF INTEREST)</b>	<b>90</b>	<b>120</b>	<b>180</b>	<b>180</b>	<b>180</b>

**DURING THIS BUSY SEASON  
THINK ABOUT USING**

**MOBILE DEPOSIT**

**ONLINE BANKING**

**BILL PAY**

**YOU CAN DO YOUR BUSINESS  
ON YOUR SCHEDULE**

**3RD QUARTER DIVIDENDS**

	<u>Dividend Rate</u>	<u>APY</u>
Shares	0.15%	0.15%
Christmas	0.15%	0.15%
IRA	0.80%	0.80%

Declared on September 18, 2018

**CONTACT US**

916 W GORE BLVD/PO BOX 143

LAWTON, OK 73502

PH 580-353-3755 FAX 580-357-6452

WEBSITE: [www.comanchecountyfcu.com](http://www.comanchecountyfcu.com)

